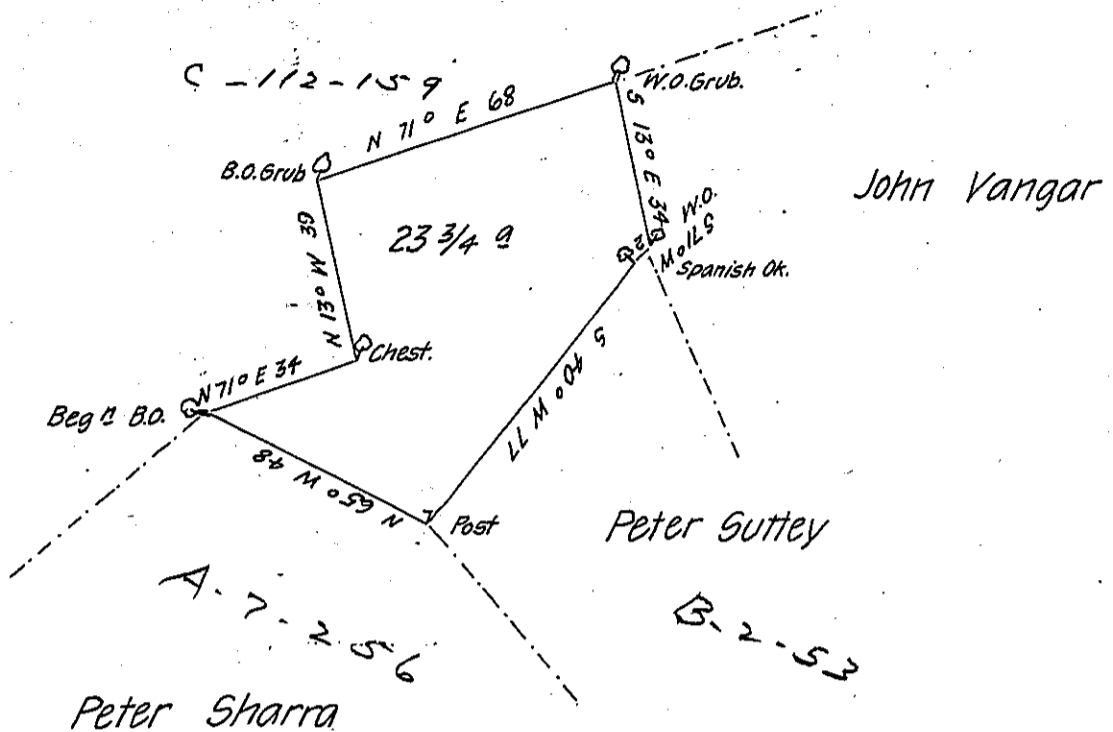


Henry Leasure



Survey'd to Peter Sharra (in right of P Andrew Rodenburger)
 on the sixteenth day of December 1762 the above described tract of twenty
 three Acres and three Quarters with Allow^{ce} of Six P. Ct. Situate in Rapho
 Townp Lancaster County By Warrant of the twenty first day of December
 1753

P-
 Bartrem Galbraith -

To John Lukens
 Survr Gen^{el}

IN TESTIMONY that the above is a copy of the original remaining on file in
 the Department of Internal Affairs of Pennsylvania, made
 conformably to an Act of Assembly approved the 16th day of
 February, 1833, I have hereunto set my Hand and caused
 the Seal of said Department to be affixed at Harrisburg,
 this twenty first day of June 1906

Isaac R. Brown
 Secretary of Internal Affairs.